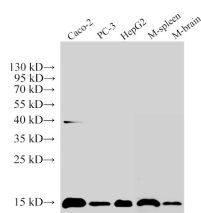


Histone H3 Polyclonal Antibody

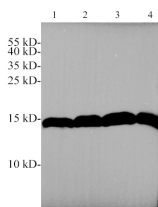
Catalog No.	E-AB-40488	Reactivity	H,M,R
Storage	Store at -20°C. Avoid freeze / thaw cycles.	Host	Rabbit
Applications	WB,IHC	Isotype	IgG

Note: Centrifuge before opening to ensure complete recovery of vial contents.

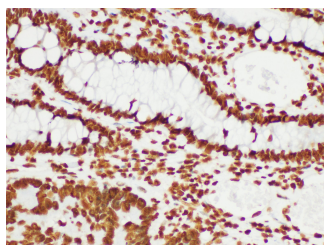
Images



Western Blot analysis of 1)Caco-2, 2)PC-3, 3)HepG2, 4)Mouse Spleen, 5)Mouse brain using Histone H3 Polyclonal Antibody at dilution of 1:250000



Western blotting with anti-Histone H3 polyclonal antibody at dilution of 1:1000. Lane 1:C6 cell lysate,Lane 2:NIH/3T3 cell lysate,lane 3:Jurkat cell lysate,lane 4:HeLa cell lysate.



Immunohistochemistry of paraffin-embedded Human colon cancer using Histone H3 Polyclonal Antibody at dilution of 1:200.

Immunogen Information

Immunogen	Synthetic peptide of Human Histone H3.1
GeneID	8350,8351,8352,8353,8354,
Swissprot	P68431
Synonyms	H31, H3FA, Hist1h3a, HIST1H3B, HIST1H3C, HIST1H3D, HIST1H3E, HIST1H3F, HIST1H3G

Product Information

Calculated MW	15 kDa
Observed MW	15 kDa
Buffer	PBS with 0.05% Proclin300, 50% glycerol, pH7.3.
Purify	Antigen Affinity Purification
Dilution	WB 1:10000-1:50000 IHC 1:200-1:500

Background

Histones are basic nuclear proteins that are responsible for the nucleosome structure of the chromosomal fiber in eukaryotes. This structure consists of approximately 146 bp of DNA wrapped around a nucleosome, an octamer composed of pairs of each of the four core histones (H2A, H2B, H3, and H4). The chromatin fiber is further compacted through the interaction of a linker histone, H1, with the DNA between the nucleosomes to form higher order chromatin structures. This gene is intronless and encodes a replication-dependent histone that is a member of the histone H3 family. Transcripts from this gene lack polyA tails; instead, they contain a palindromic termination element. This gene is found in the large histone gene cluster on chromosome 6p22-p21.3.

For Research Use Only

Thank you for your recent purchase.
 If you would like to learn more about antibodies, please visit www.elabscience.com.

Focus on your research
Service for life science

Applications:WB-Western Blot IHC-Immunohistochemistry IF-Immunofluorescence IP-Immunoprecipitation FC-Flow cytometry ChIP-Chromatin Immunoprecipitation Reactivity: H-Human R-Rat M-Mouse Mk-Monkey Dg-Dog Ch-Chicken Hm-Hamster Rb-Rabbit Sh-Sheep Pg-Pig Z-Zebrafish X-Xenopus C-Cow.